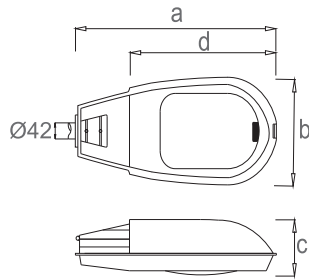
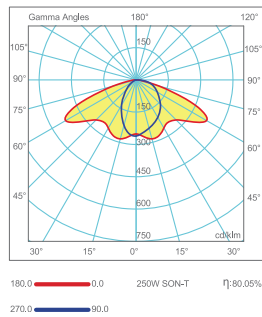


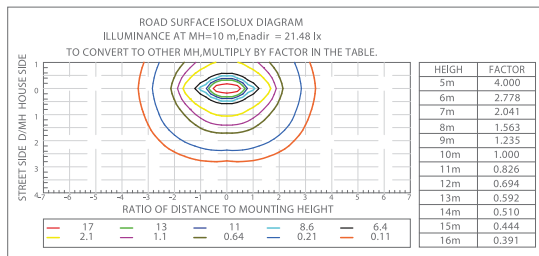
Technical Drawing



Light Distribution Curve



Isolux Diagram\*



Product Details

Order Code	Type	Power (W)	Current (A)	Lamp Type	Luminous Flux (lm)	Igniter (W)	Capacitor (µF±10 250 V)	Dimensions (mm) a b c d	Base	Pcs/Pack	Ballast Type
CST 130609	Putra G	100	1.2	SON-T	9500	70-400	12	685x322x220x400	E40	1	Magnetic
CST 130610	Putra G	150	1.8	SON-T	14000	70-400	20	685x322x220x400	E40	1	Magnetic
CST 130611	Putra G	250	3	SON-T	25000	70-400	32	685x322x220x400	E40	1	Magnetic
CST 130612	Putra G	400	4.4	SON-T	48000	70-400	45	685x322x220x400	E40	1	Magnetic

Putra J - HID  
Road and Street Luminaire

Mechanical Specifications

- + Luminaires for high pressure mercury vapour lamp, high pressure sodium lamp, metal halide lamp or compact fluorescent lamp.
- + Housing of die-cast aluminium alloy, painted electrostatically in silver colour or in twin colours on request.
- + Adjustable reflector from anodized high purity aluminium (99,8%).

Optical Specifications

- + Porcelain lampholder with horizontal and vertical mechanical focusing device.
- + Gaskets made of anti-age weather resistant silicon rubber.
- + Connection to power supply via a cable gland with protection IP65.
- + Teflon filter for decompressing the luminaire.
- + Gear tray of galvanized steel for Class I or of a special thermoplastic material for Class II
- + For Class II electrical safety switch disconnects the main power supply on opening the luminaire in maintenance.

Technical & Electrical Specifications

- + The luminaires are in accordance with regulations EN 60598-2-3.
- + Connection for operation on 220V-50Hz with a conventional control gear and power factor correction capacitor.

Options

- + Grey, Blue colour.

Fields of Application



Standards of Application

